



# 131~132 PARK LANE

MAYFAIR • LONDON



Apartments





*131-132 Park Lane offers five remaining unique apartments all benefiting from spectacular views of London's Hyde Park.*

All apartments are available on new 125 year leases. Mayfair continues to be one of London's most desirable residential areas. The apartments are ideally located for some of London's most exquisite restaurants, and world famous shopping on Bond Street.

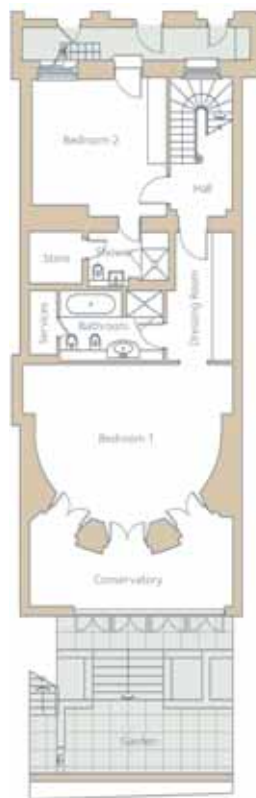
All apartments have been finished to the highest specification, however each apartment has its own unique features.

All apartments are sophisticated in terms of building services. Each apartment is wired for a Creston system which interfaces the following: Dynalite control system, heating/cooling system, Intercom and external security cameras, window blinds and Audio Visual installation. Comfort cooling is provided in each apartment, serving all principal rooms and bedrooms. Each apartment is equipped with a Crestron entry system. External bespoke video entry panel and dedicated call button to each apartment allowing visual and audible communication with front entrance.

**Apartment One**  
Total 183 sqm 1,968sq ft

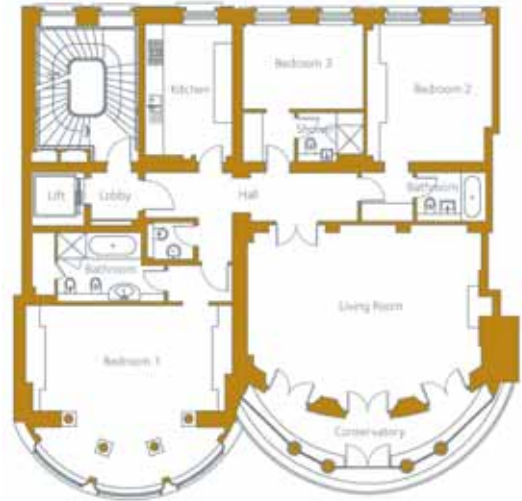


Ground floor



Garden level

**Apartment Three**  
Total 206 sqm 2,215sq ft First floor



**Apartment Four**  
Total 177 sqm 1,890sq ft Second floor



**Apartment Five**  
Total 177 sqm 1,904sq ft Third floor



The five remaining apartments vary in size from 1,890 Sq/Ft – 2,653 Sq/Ft.

Ground/lower ground floor	1,968 sq/ft	£3,000,000
Ground/lower ground floor	2,653 sq/ft	£4,000,000
First floor	2,215 sq/ft	£4,500,000
Second floor	1,890 sq/ft	£3,500,000
Third floor	SOLD	SOLD
Fourth/fifth/floor	2,409 sq/ft	£5,500,000



**PORTMAN HERITAGE**

RESIDENTIAL SALES · LETTINGS · MANAGEMENT · INVESTMENTS

**TELEPHONE: 020 7487 4994**

FACSIMILE MAIN: 020 7487 3993 SALES FAX: 020 7487 5929

E-mail: [prop@portmanheritage.com](mailto:prop@portmanheritage.com)

[www.portmanheritage.com](http://www.portmanheritage.com)